



**F
O
R
S
A
L
E
O
r
L
E
A
S
E**



1500 N. Wilmot Rd. 150 B Medical Office Condo

Medical Office Space in the El Dorado Medical Plaza located on the campus of:

- Tucson Medical Center Outpatient Procedure Center
- TMC One Medical Group

Ground floor Condo unit with easy parking for patients and entrée through a central courtyard. Designed floorplan suitable for a wide variety of medical practices or medically related user.

Condo layout includes 2 exam rooms, reception, lab area, records area, patient restroom and physician office with private bathroom.

Conveniently located between two major hospitals.

- Tucson Medical Center
- St. Joseph's Hospital.

Easy ingress and egress off Wilmot. Reserved covered parking in the rear.

Sale Price: \$52,350

Lease Rate: \$14.00 SF MG

Parcel #	133-14-7590
size	1,047 square feet
zoning	C-1
Taxes 2016:	\$2985.20
Taxes 2017:	Tax appeal was approved. Pima County Assessors reduced the Limited Property Value from \$99,465 to \$52,350 starting in tax year 2017.

Exclusively Represented by:

Tucson Realty & Trust Co.
Frank Arrotta C. 520.465.5291

O. 520.577.7000



Tucson Realty & Trust Co.

Southwest Expertise, Global Capability

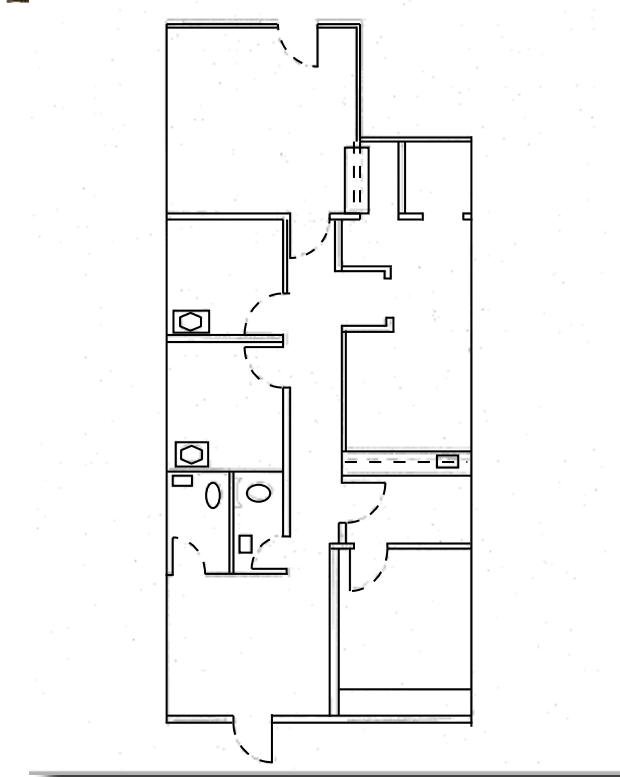
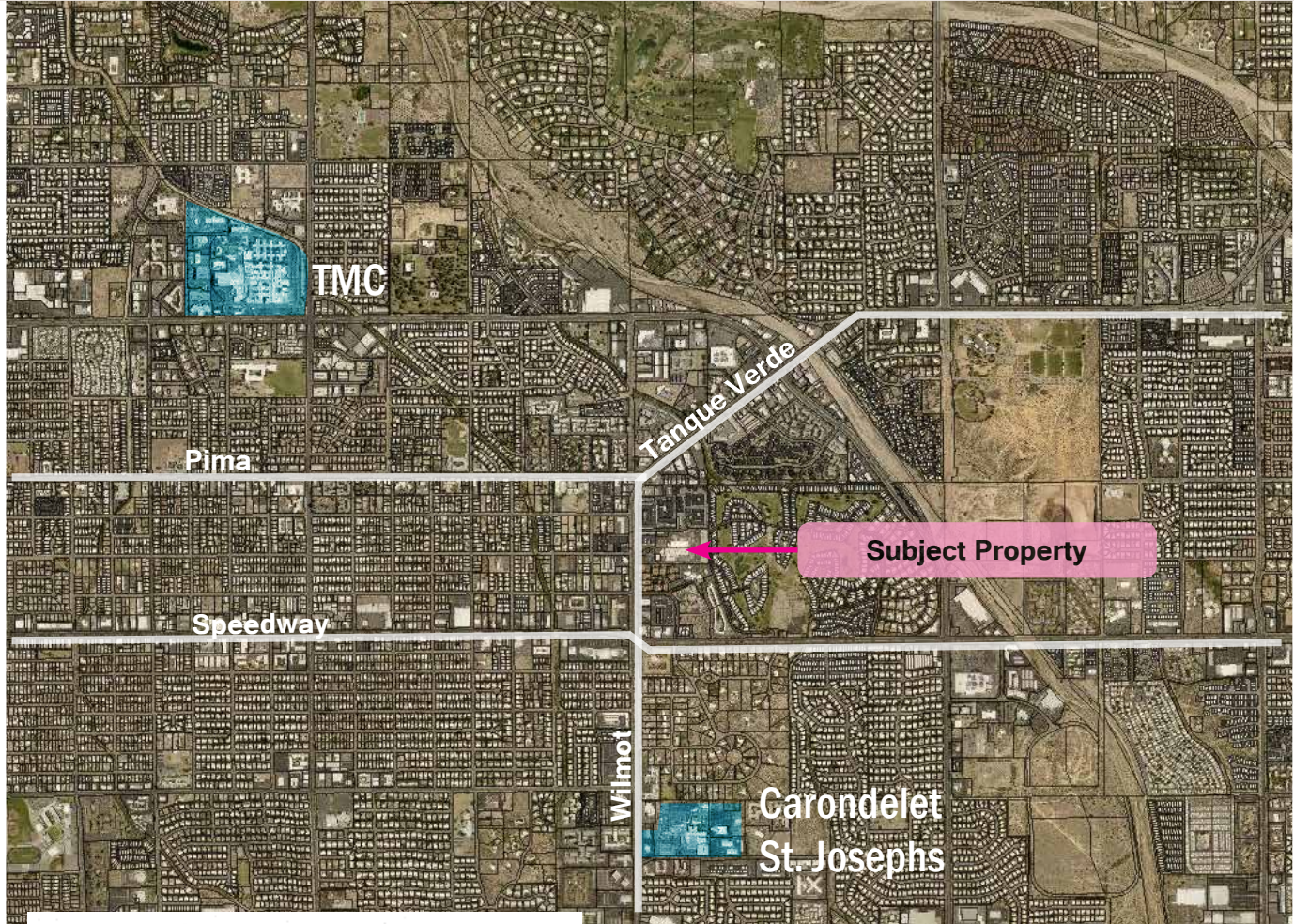
333 N. Wilmot Rd., Ste 340

Tucson, AZ 85711

phone: 520.577.7000

www.tucsonrealty.com

FOR SALE or LEASE



Exclusively Represented by:

Tucson Realty & Trust Co.
Frank Arrotta C. 520.465.5291

O. 520.577.7000

Information contained herein has been obtained from the owner of the property or other source that we deem reliable. We have no reason to doubt its accuracy, but do not guarantee it.