



# Tucson Realty & Trust Co.

Southwest Expertise, Global Capability

333 N. Wilmot Road, Suite 340

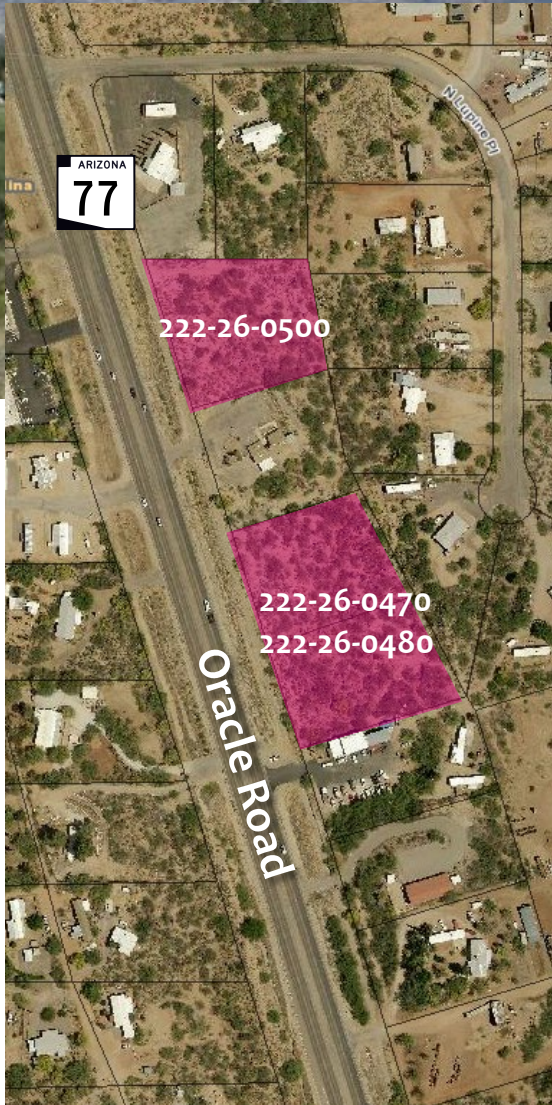
Tucson, AZ 85711

520-577-7000

[www.tucsonrealty.com](http://www.tucsonrealty.com)

FOR SALE

## Retail Pads for Sale



### 15610, 15520 N. Oracle Rd., Catalina AZ

222-26-0500	55,876 SF	Retail Pad	\$215,000 (\$3.85 PSF)
222-26-0470 222-26-0480	101,621 SF	Two Parcels	\$350,000 (\$3.44 PSF)

Located just north of the Basha's anchored Retail Center at the northeast corner of Golder Ranch and Oracle, these parcels are ideal for restaurant or other retail uses.

Exclusively Represented by:

**Tucson Realty & Trust Co.**

**Mike Gross**

Cell 520-977-0144

Office 520-577-7000

**Frank Arrotta**

Cell 520-465-5291

Office 520-577-7000

Information contained herein has been obtained from the owner of the property or other source that we deem reliable. We have no reason to doubt its accuracy, but do not guarantee it.



# Tucson Realty & Trust Co.

Southwest Expertise, Global Capability

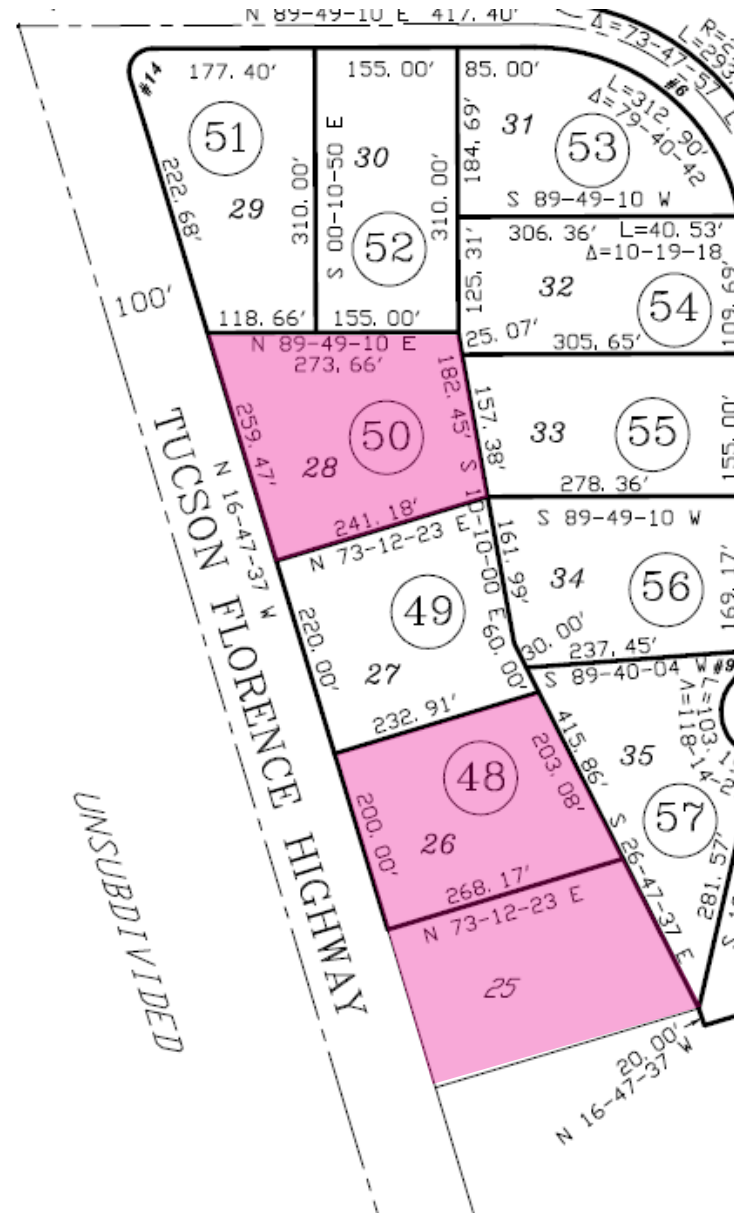
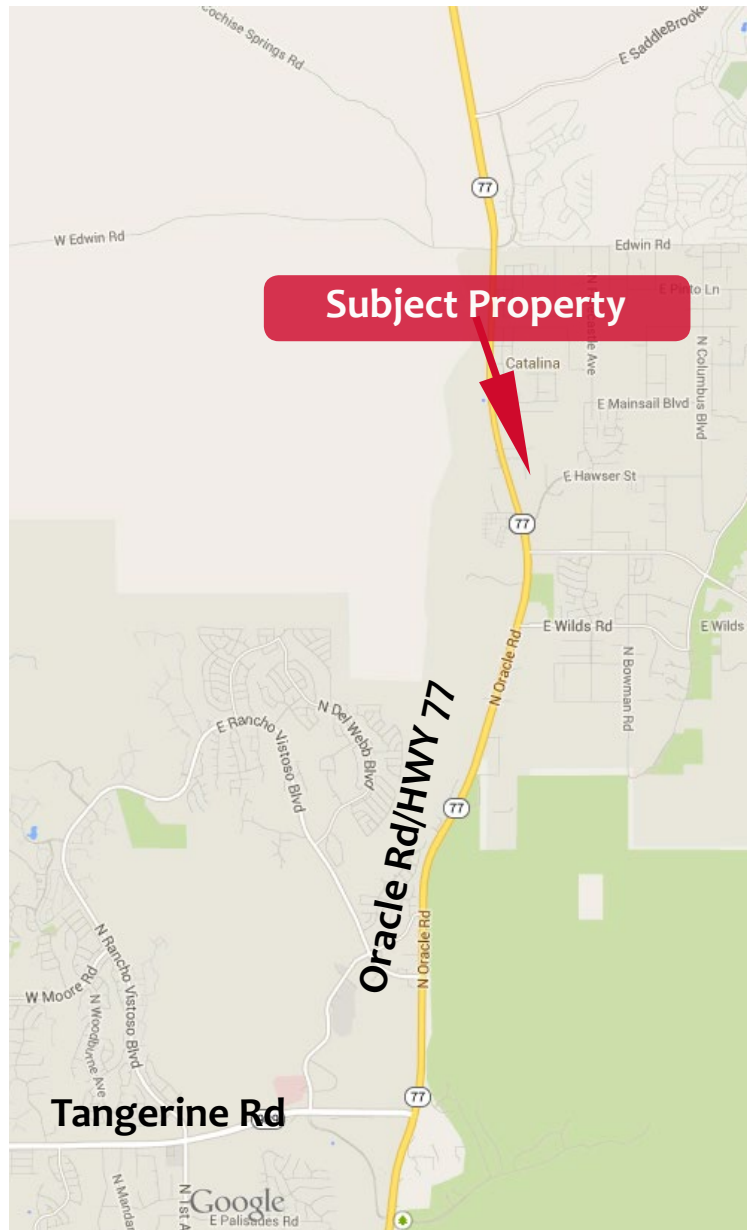
333 N. Wilmot Rd., Ste 340

Tucson, AZ 85711

phone: 520.577.7000

www.tucsonrealty.com

FOR SALE



Information contained herein has been obtained from the owner of the property or other source that we deem reliable. We have no reason to doubt its accuracy, but do not guarantee it.