



**17 W. Wetmore, Tucson, AZ 85705**

**F  
O  
R  
L  
E  
A  
S  
E**

**Lease Information**

Lease Rate: \$16.50 SF/YR  
Full Service

**1st Floor:**

- Suite 100 2,235 SF
- Suite 102 613 SF

**2nd Floor:**

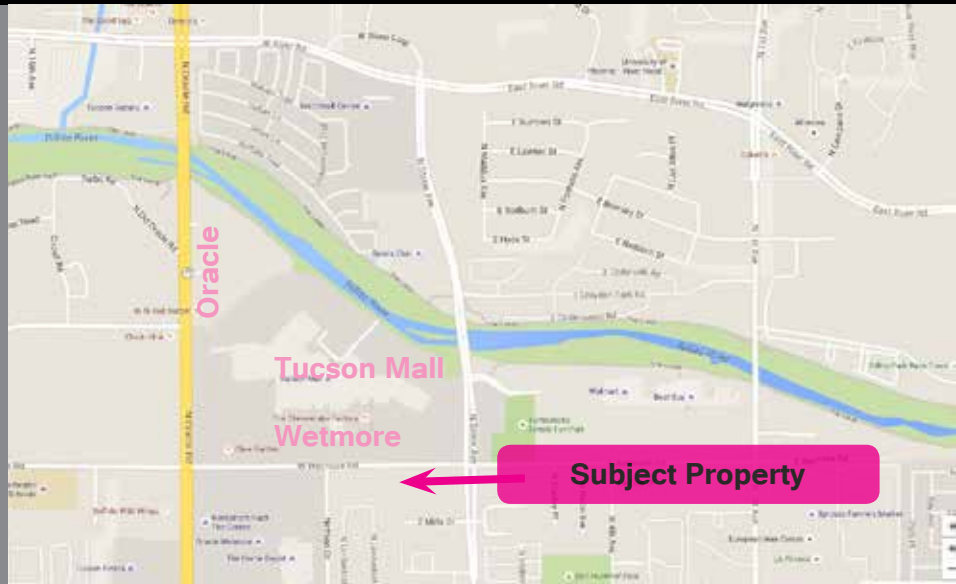
- Suite 200 2,278 SF
- Suite 201/203 3,145 SF

**3rd Floor**

- Suite 302 1507 SF
- Suite 308 1990 SF

**Property Information:**

- Covered Parking Available
- Professional Business Setting
- Tremendous Visibility
- Many Great Restaurants and Shops Nearby



*Exclusively Represented by:*  
**Tucson Realty & Trust Co.**  
**Doug Richardson** C. 520.205-2718  
**Mike Gross** C. 520.977.0144  
O. 520.577.7000



# Tucson Realty & Trust Co.

Southwest Expertise, Global Capability

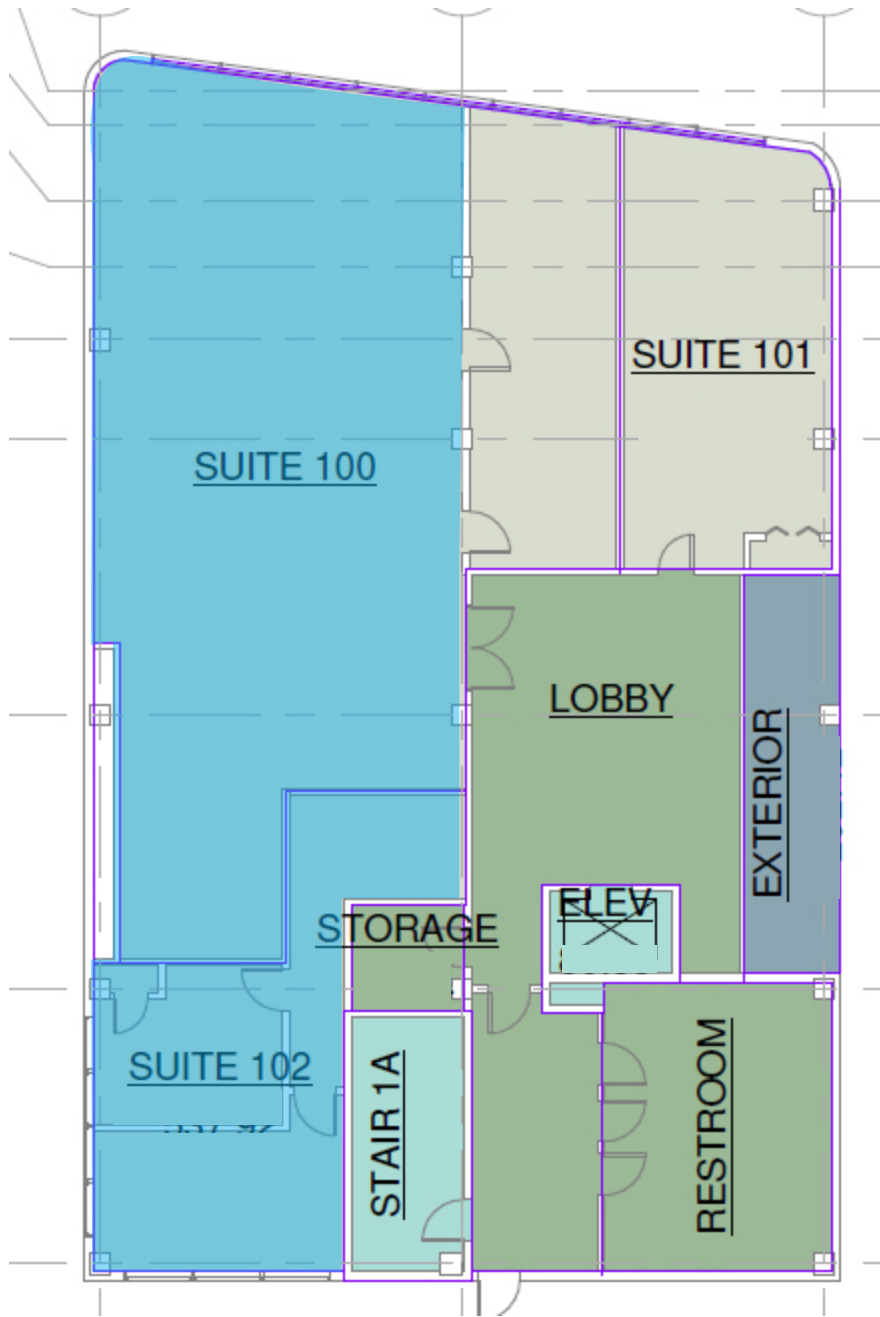
333 N. Wilmot Rd., Ste 340

Tucson, AZ 85711

phone: 520.577.7000

www.tucsonrealty.com

FOR LEASE



First Floor

Available

Exclusively Represented by:

Tucson Realty & Trust Co.

**Doug Richardson** C. 520.205-2718

**Mike Gross** C. 520.977.0144

O. 520.577.7000



# Tucson Realty & Trust Co.

Southwest Expertise, Global Capability

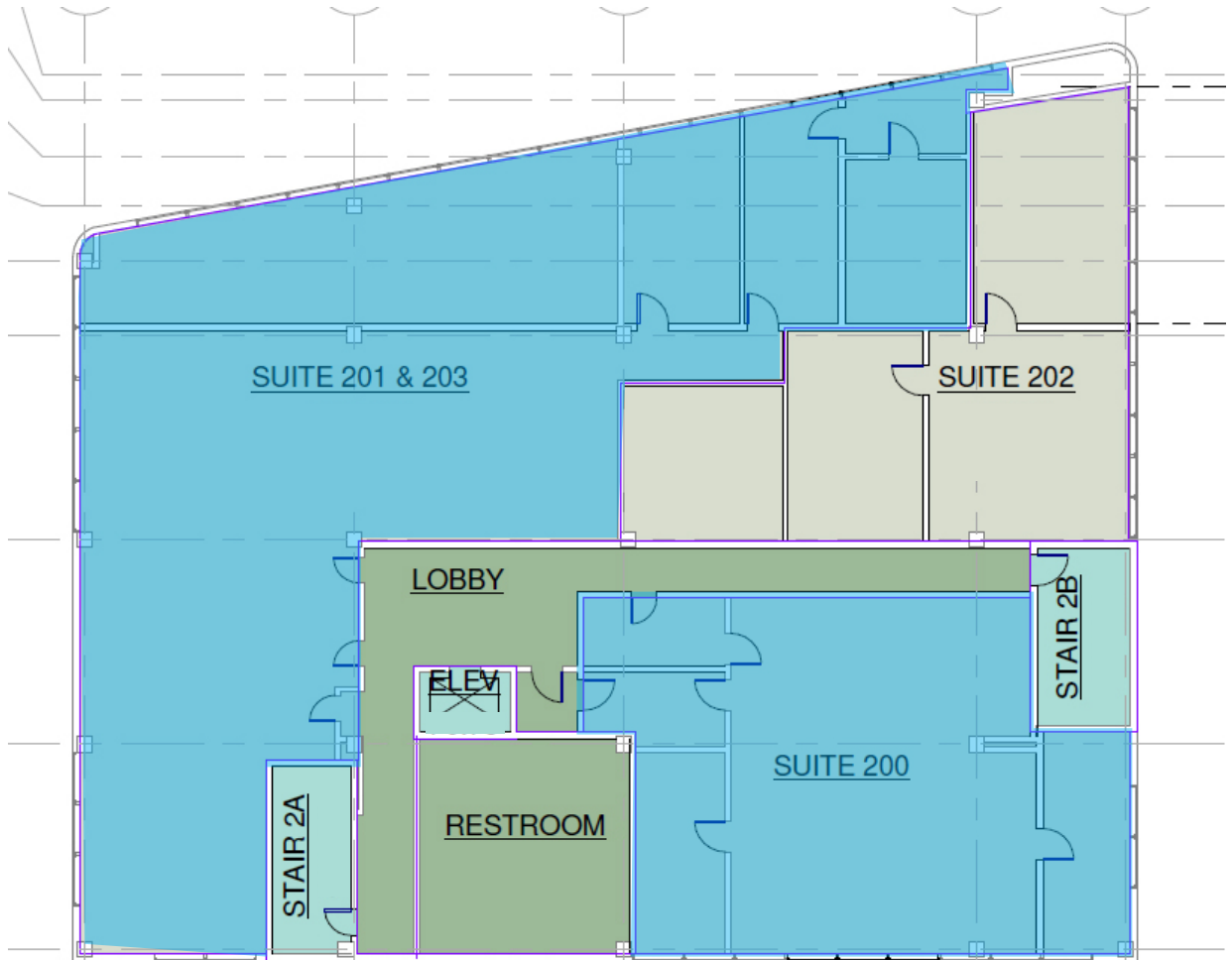
333 N. Wilmot Rd., Ste 340

Tucson, AZ 85711

phone: 520.577.7000

www.tucsonrealty.com

FOR  
LEASE



Second Floor  
Available

*Exclusively Represented by:*

**Tucson Realty & Trust Co.**

**Doug Richardson** C. 520.205-2718

**Mike Gross** C. 520.977.0144

O. 520.577.7000



# Tucson Realty & Trust Co.

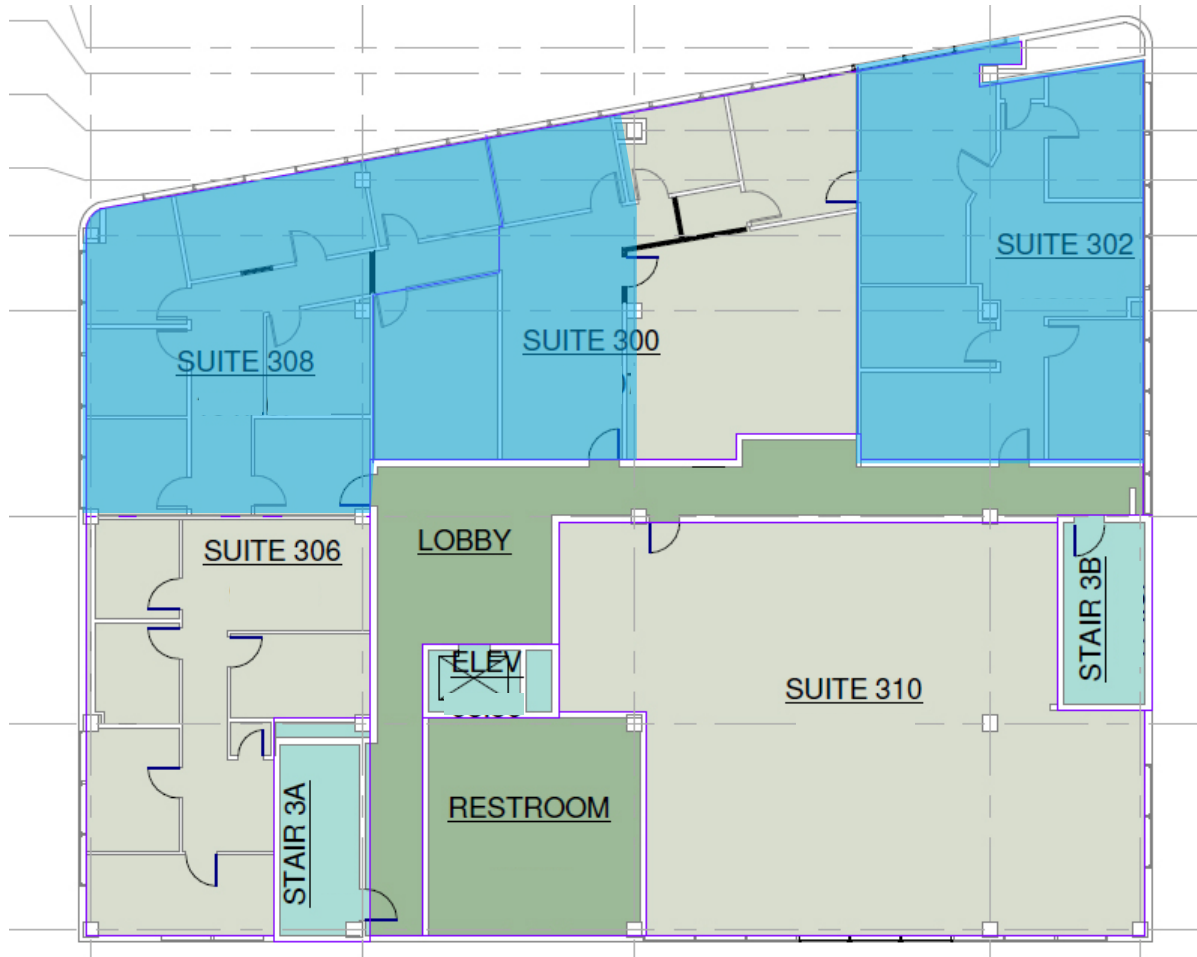
Southwest Expertise, Global Capability

333 N. Wilmot Rd., Ste 340

Tucson, AZ 85711

phone: 520.577.7000

www.tucsonrealty.com



Third Floor  
Available

*Exclusively Represented by:*

**Tucson Realty & Trust Co.**

**Doug Richardson** C. 520.205-2718

**Mike Gross** C. 520.977.0144

O. 520.577.7000

FOR  
LEASE