



Tucson Realty & Trust Co.

Southwest Expertise, Global Capability

333 N. Wilmot Rd., Ste 340

Tucson, AZ 85711

phone: 520.577.7000

www.tucsonrealty.com

FOR
LEASE



5501 N. Swan Da Vinci Plaza

Location: North Swan and Sunrise

Size Available: Suite Suite 200 ± 2,106 RSF

Sublease or new lease

Current lease expires 5/17/17, lease rate is \$15.00 Full Service

Comments: Spectacular location (Swan & Sunrise) that has a traffic count and high net worth individuals combination that is hard to match.

When you office at DaVinci Plaza, you can work out in our gym before you start your day at Select Fitness, view the stunning Catalina Mountain range from the comfort of your desk, dine at Trattoria Pina for lunch, work out again, and walk to banks & grocery shopping, all without a moment spent in your car, and did we mention that Trattoria Pina is of course open for dinner too. Sneak away for a little golf with Skyline, Ventana, and La Paloma just minutes away.

We won't tell.

Lease Rate \$15.00

Full Service

Exclusively Represented by:

Tucson Realty & Trust Co.

Mike Gross C. 520.977.0144

or Doug Richardson C. 520.205.2718

O. 520.577.7000



Tucson Realty & Trust Co.

Southwest Expertise, Global Capability

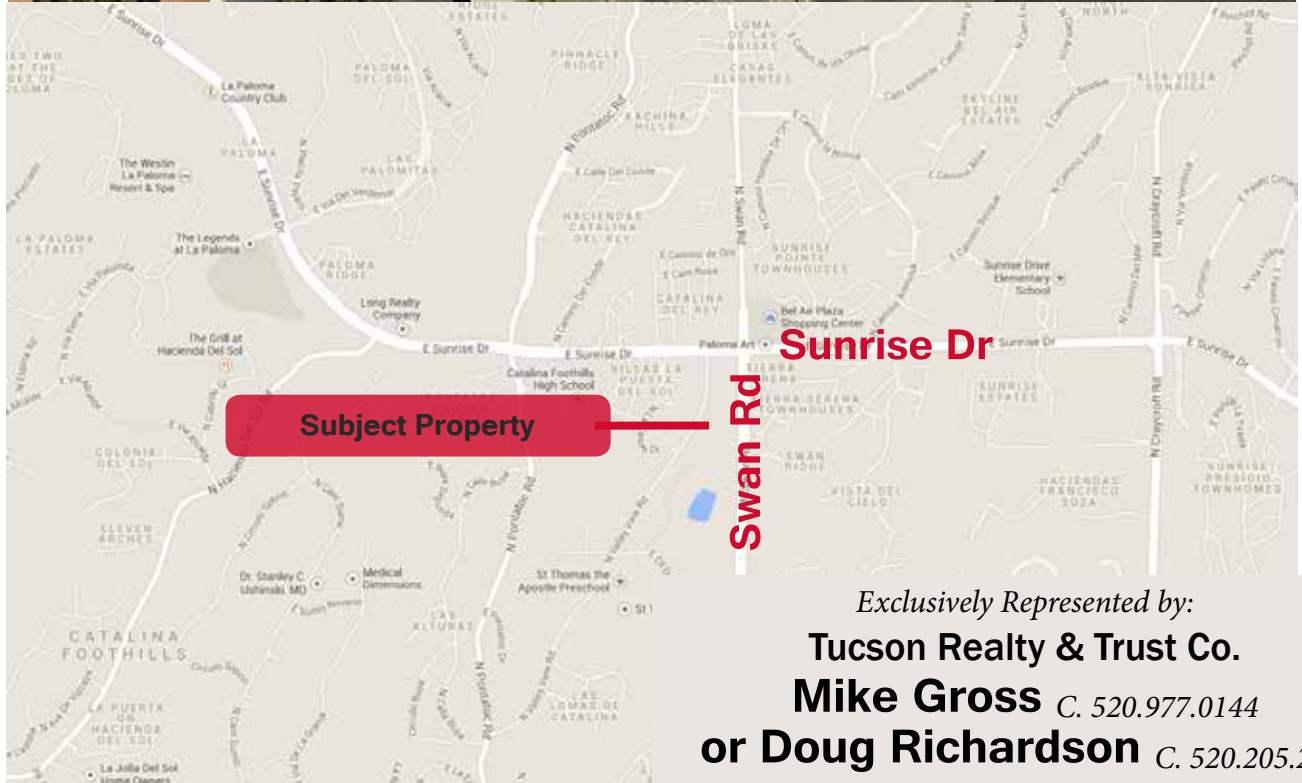
333 N. Wilmot Rd., Ste 340

Tucson, AZ 85711

phone: 520.577.7000

www.tucsonrealty.com

FOR LEASE



Exclusively Represented by:

Tucson Realty & Trust Co.

Mike Gross C. 520.977.0144

or Doug Richardson C. 520.205.2718

O. 520.577.7000

Information contained herein has been obtained from the owner of the property or other source that we deem reliable. We have no reason to doubt its accuracy, but do not guarantee it.



Tucson Realty & Trust Co.

Southwest Expertise, Global Capability

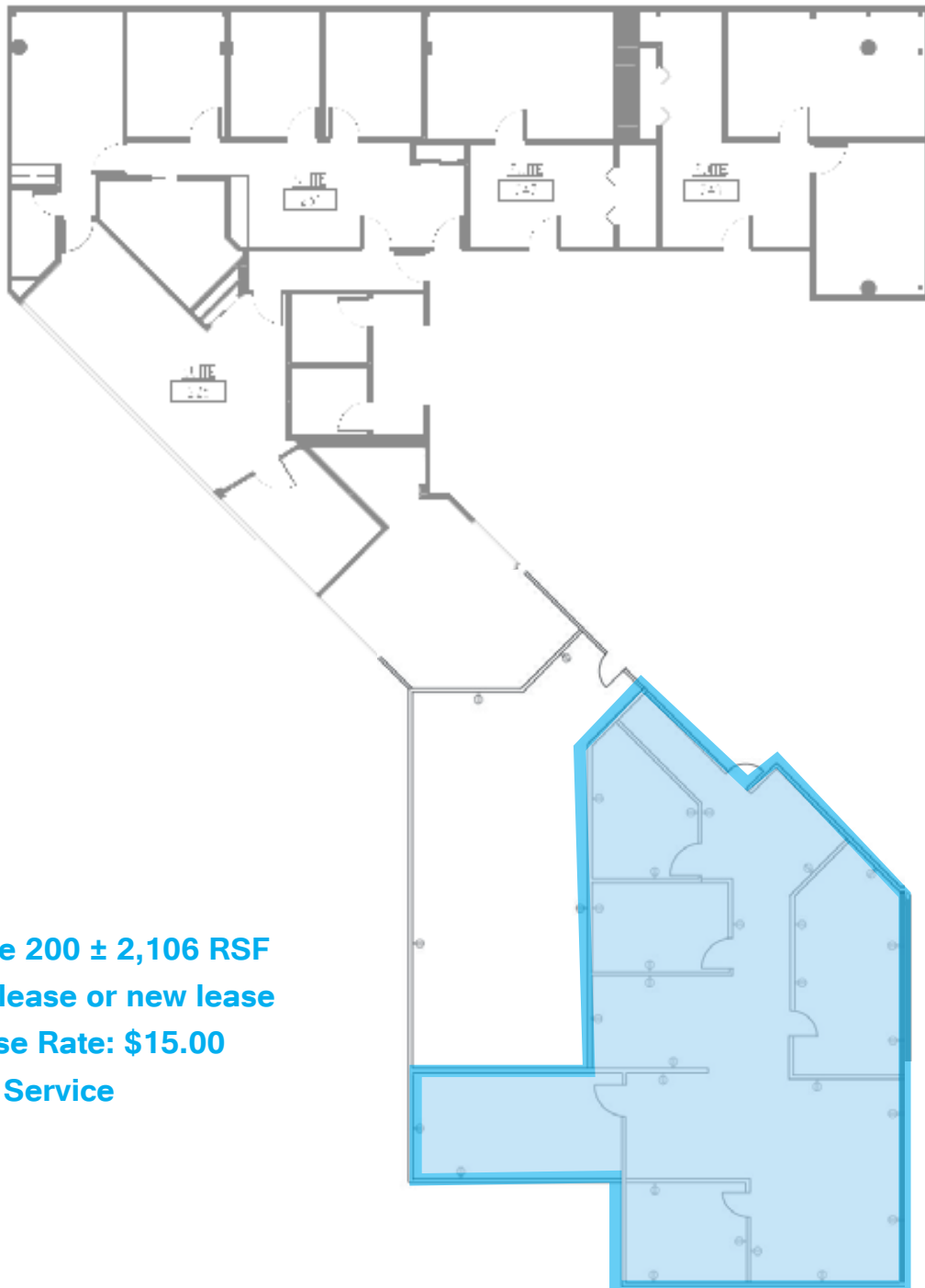
333 N. Wilmot Rd., Ste 340

Tucson, AZ 85711

phone: 520.577.7000

www.tucsonrealty.com

FOR
LEASE



Suite 200 ± 2,106 RSF
Sublease or new lease
Lease Rate: \$15.00
Full Service

Exclusively Represented by:

Tucson Realty & Trust Co.

Mike Gross C. 520.977.0144

or Doug Richardson C. 520.205.2718

O. 520.577.7000

Information contained herein has been obtained from the owner of the property or other source that we deem reliable. We have no reason to doubt its accuracy, but do not guarantee it.