



# Tucson Realty & Trust Co.

Southwest Expertise, Global Capability

333 N. Wilmot Rd., Ste 340

Tucson, AZ 85711

phone: 520.577.7000

www.tucsonrealty.com

FOR  
LEASE



Rent only \$500  
for the first 3 months  
with a 3 year lease

## 6616 E. Carondelet Suite 100

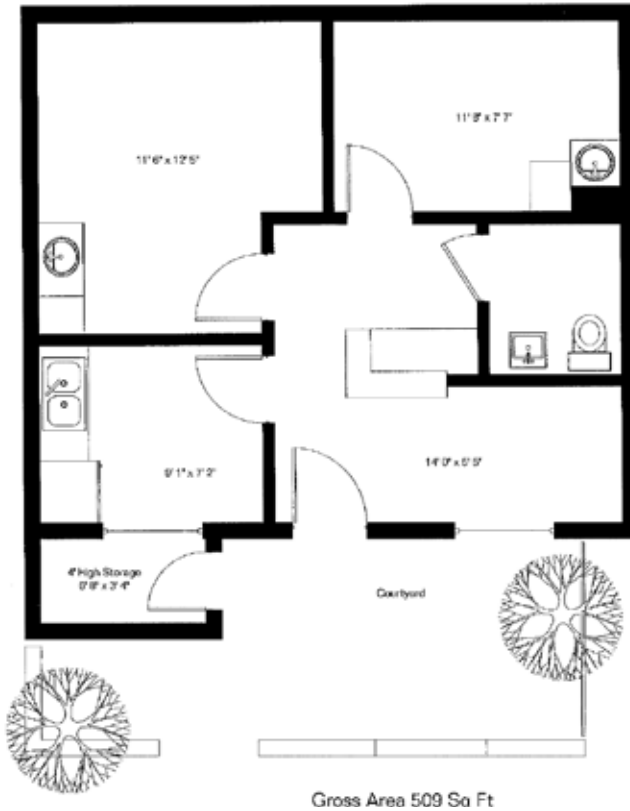
- *A one-story office/medical suite available in San Rafael Professional Offices*
- *Located next to St. Joseph's Hospital Campus*
- *Close to restaurants and shopping*
- *Ample Parking*
- *Central Location off Wilmot Between Broadway & Speedway*



**±504 SF**  
**Lease Rate: \$975**  
**Modified Gross**

*Exclusively Represented by:*  
**Tucson Realty & Trust Co.**  
**Doug Richardson** C. 520.205.2718  
O. 520.577.7000

**Floor Plan for 6616 E. Carondelet**



- Most professional users allowed (pending association approval)
- Rare drive-up entrance for easy access.
- Move-in ready

**FOR LEASE**



**Property information:**  
 Available Space: Suite 6616 ±504 SF  
 Year Built: 1979  
 Zoning: O-3, Office Zone (City of Tucson)

*Exclusively Represented by:*  
**Tucson Realty & Trust Co.**  
**Doug Richardson** C. 520.205.2718  
 O. 520.577.7000

Information contained herein has been obtained from the owner of the property or other source that we deem reliable. We have no reason to doubt its accuracy, but do not guarantee it.



# Tucson Realty & Trust Co.

Southwest Expertise, Global Capability

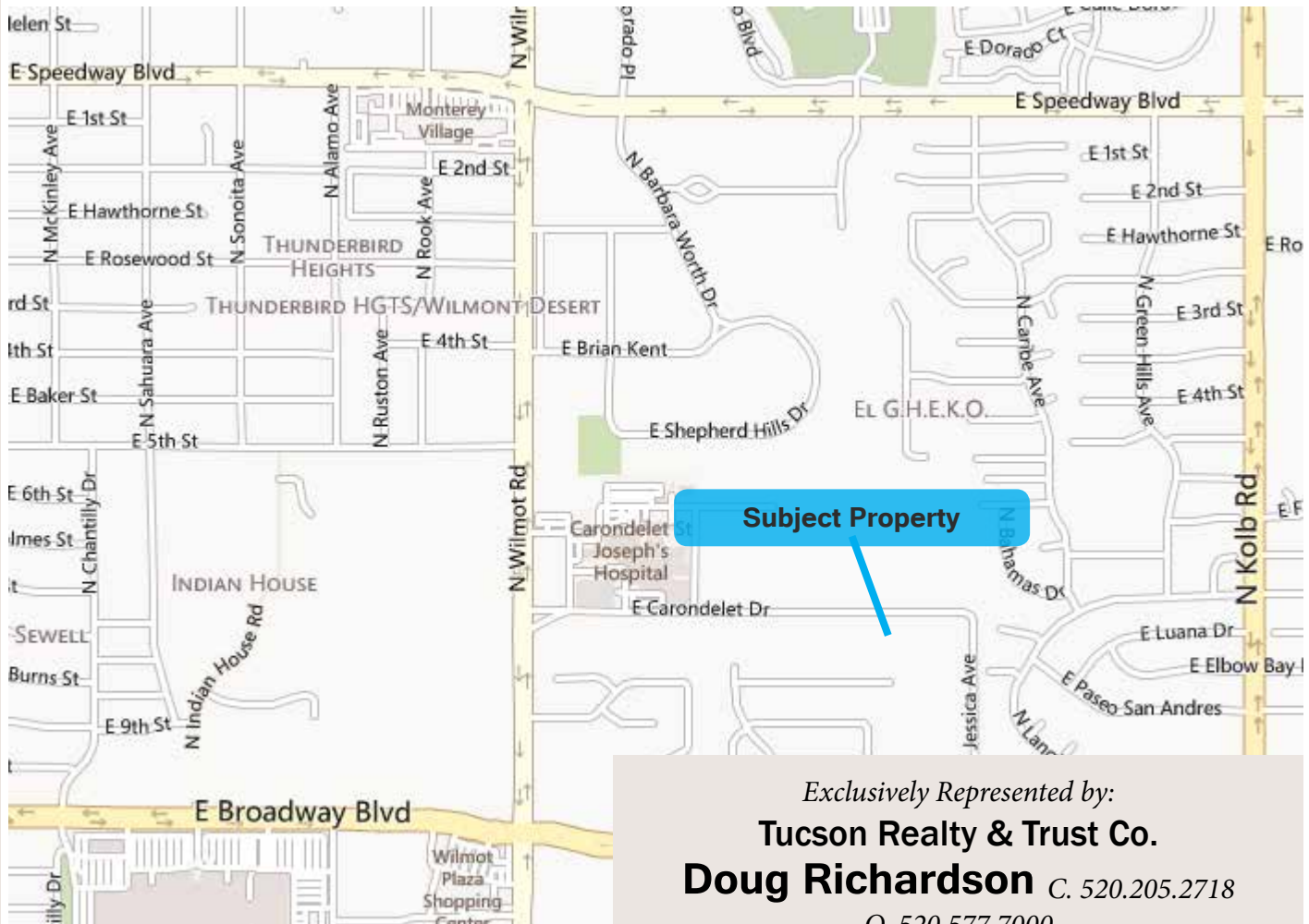
333 N. Wilmot Rd., Ste 340

Tucson, AZ 85711

phone: 520.577.7000

www.tucsonrealty.com

FOR LEASE



Exclusively Represented by:  
**Tucson Realty & Trust Co.**  
**Doug Richardson** C. 520.205.2718  
O. 520.577.7000

Information contained herein has been obtained from the owner of the property or other source that we deem reliable. We have no reason to doubt its accuracy, but do not guarantee it.