



Tucson Realty & Trust Co.

Southwest Expertise, Global Capability

333 N. Wilmot Rd., Ste 340

Tucson, AZ 85711

520-577-7000

www.tucsonrealty.com

FOR SALE

Near Civano & Sierra Morado
Master Planned Communities!



Features...

- Near the Master Planned Communities of Civano and Sierra Morado
- Within the Tucson Water service area but also has an on-site well
- Beautiful setting with mountain and Pantano Wash Views
- Potential for adult care or other community serving use

18.65 Acres
\$950,000

Location: 11330 E Drexel Rd.

Zoning: SR City of Tucson

Land Area: 18.65 Acres

Tax Parcel: 205-67-004E

Sale Price: \$950,000

Zoned SR City of Tucson.
Rezone for higher density residential or potential for adult care or other community serving use in an underserved area.

Demographics*	1-Mile	2-Mile	3-Mile
Est. Pop. (2018):	2,398	12,702	58,962
Est. Avg. HH Income (2018):	\$89,244	\$87,309	\$81,525

*Source - CoStar

Exclusively Represented by:

Tucson Realty & Trust Co.

Hank Amos

Office 520-577-7000

hank@tucsonrealty.com

Tucson Realty & Trust Co.
Management Services, L.L.C.

Chuck Blacher

Cell 520-360-7800

cblacher@trtmanagement.com

Information contained herein has been obtained from the owner of the property or other source that we deem reliable. We have no reason to doubt its accuracy, but do not guarantee it.



Tucson Realty & Trust Co.

Southwest Expertise, Global Capability

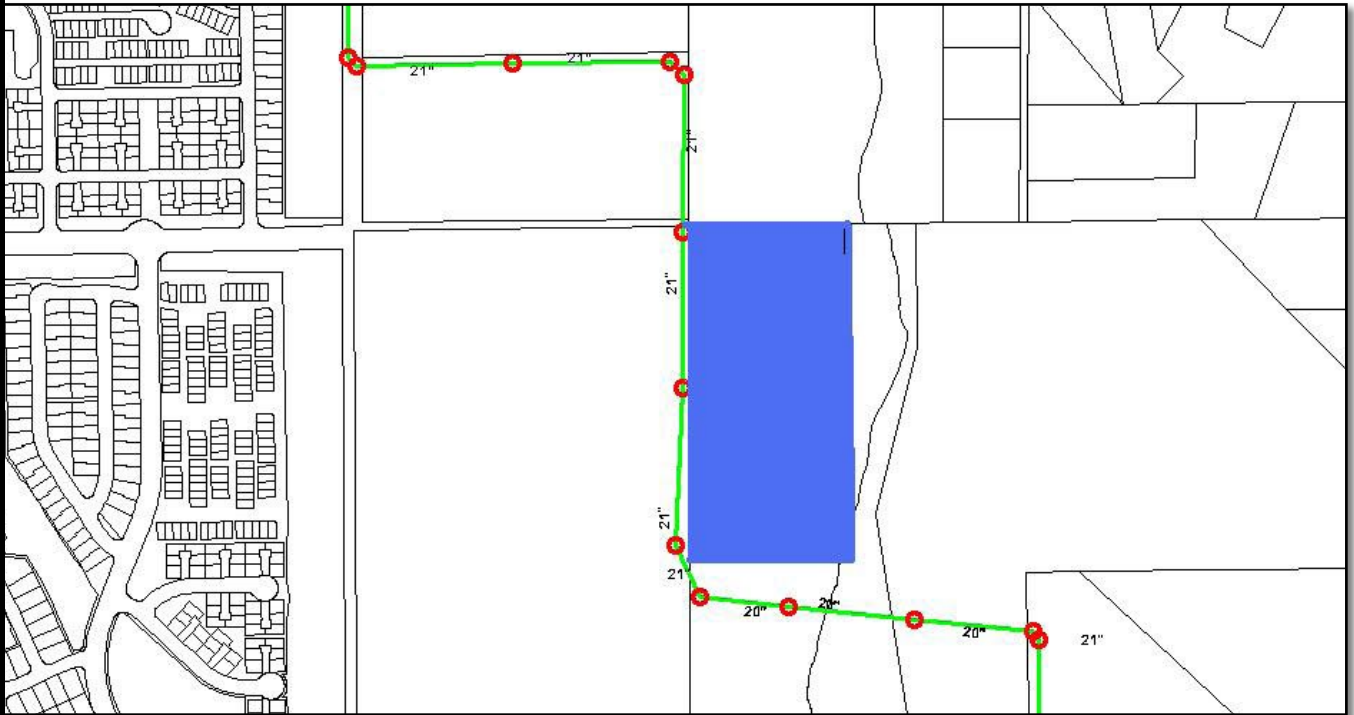
333 N. Wilmot Rd., Ste 340

Tucson, AZ 85711

520-577-7000

www.tucsonrealty.com

Sewer Lines adjacent to property



Aerial Photo showing close proximity to natural wash area yet largely unaffected



FOR SALE